

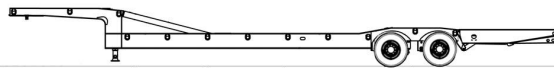
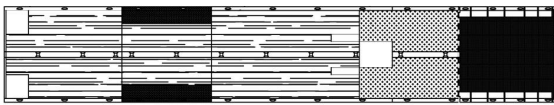
FT-70-2 PH-HT

Semi - Perimeter Frame/ Hyd Tail

GVWR LBS:	GAWR LBS:	WEIGHT LBS:	CAPACITY LBS:
86,000	40,560	16,000	70,000

- Swing Clearance is 84" Standard
- 48" King Pin height
- 18" King Pin set back
- 6° Break-Over 18" before beavertail hinge
- Engineered, Cambered, Fabricated Main Beams
- 8" Crossmembers 12" on center
- 3/16" Gr 80 Tread Plate covered rear trunnion, tail & ramp

- Star Plate covered center & Traction Bars outer over tread plate
- Mid-Ship Turn/Marker Lights
- Hyd Couplers, 3/4" Pioneer, Male 6602-12-12, Female 6601-12-12
- Hydraulic pressure requirement 3,000 PSI
- * NOTE: Dealer must add 12% FET on retail price. Tax is to be calculated & remitted by dealer.



Shown with Optional Ramps Top Deck to Main Deck, Double Drop Deck



Standard & Other Options	Description	Std. Option	Std. Qty.	Unit
Load Capacity	70,000 lbs Distributed, 52,500 lbs in 16 ft	X	1.00	Std
Upper Deck	90° Neck	X	10.00	Feet
Deck Length	Main Deck Length	X	29.00	Feet
Beavertail	8'6" Hydraulic w/4' Fold Under ** 12' 6" Total ** (Star Plate Center/ Traction Bars Outer)	X	9.00	Std
Deck Type	White Oak 2" Nom	X	1.00	Std
Appx Deck Height	59" Upper Deck, 41" Main Deck, Loaded	X	1.00	Inches
Width	102" OD	X	1.00	Inches
Tie Downs	Combination Chain Slots (3/8") with Stake Pockets every 2'	X	1.00	Std
Brakes	Air, ABS 2S/1M, Meritor WABCO (Parking brakes on all axles)	X	1.00	Std
Axles	25K Oil Bath	X	2.00	Std
Suspension	49" Spread Air Ride, Ridewell 260 with Dump Valve and Pressure Gauge	X	1.00	Std
Tires & Wheels	255/70R 22.5 H, 10 Bolt [22.5 x 8.25] Hub Pilot	X	8.00	Std
Hitch Type	Semi King Pin [S] with 18" Setback, 48" Height	X	1.00	Std
Jack	160,000# Twin 2 Speed, JOST (50,000 lb Lift Capacity)	X	1.00	Std
Plug	7 Pole Semi Socket	X	1.00	Std
Lights	LED, with Sealed Wiring Harness & Mid-Turn LED Lights	X	1.00	Std
Trailer Color	Felling Black # CCA945378 (White Felling Decal)	X	1.00	Std
Stripe Color	White	X	1.00	Std
Standard	Chain Boxes in Front Corners of Upper Deck, Lockable	X	2.00	Each
Standard	Document Holder	X	1.00	Std



FELLING TRAILERS, INC.

Product Sheet

1525 Main Street South, Sauk Centre, MN 563

4500-A

Phone: 800-245-2809; FAX: 320-352-5230

www.felling.com

Standard	Winch Ready, Includes Mounting Bracket & Valve	X	1.00	Std
Standard	Plumbed for Wet Kit with Hyd Couplers, Pressure- 3/4" Pioneer, Male 6602-12-12, Return- 3/4" Pioneer Female 6601-12-12 ** 3,000 PSI Required **	X	1.00	Std
GVWR	86,000 lbs	X	1.00	Std